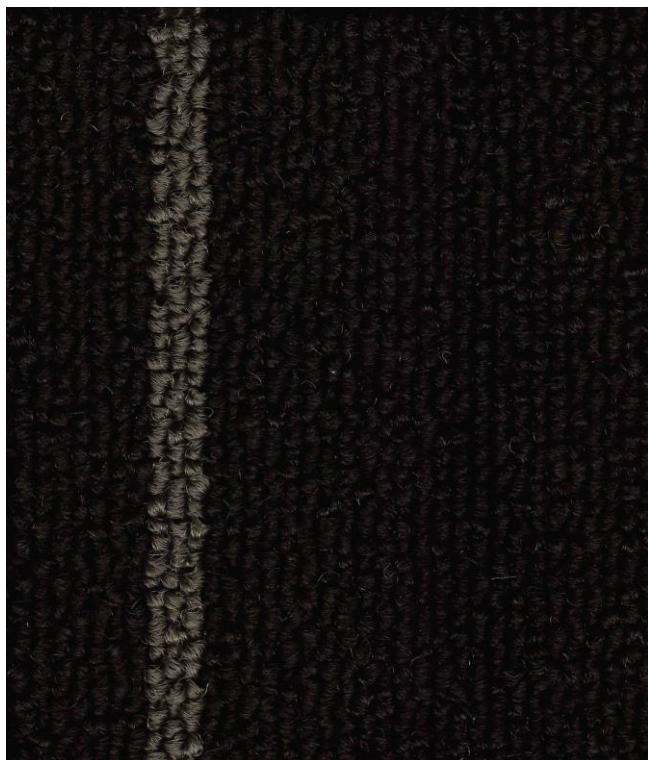
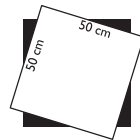
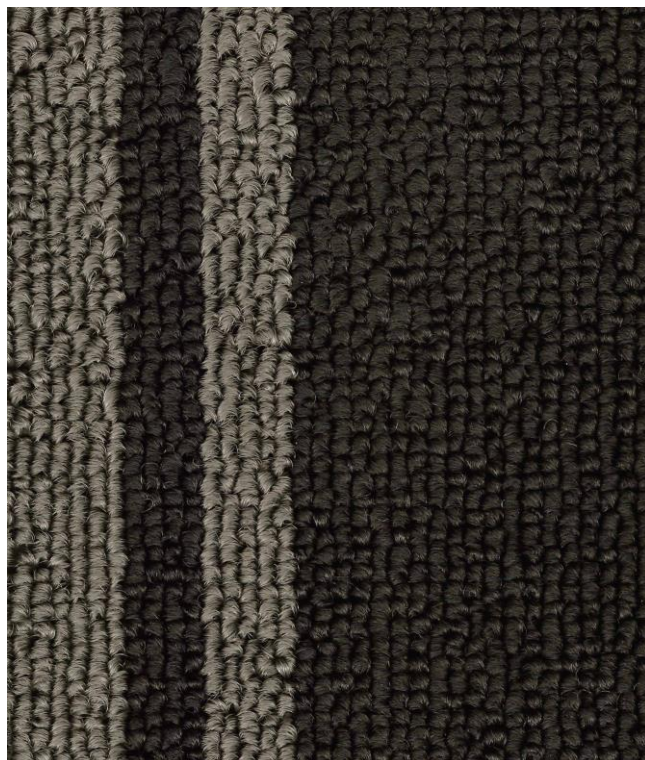


**50 X 50 CARPET
TILES**

XPRESS



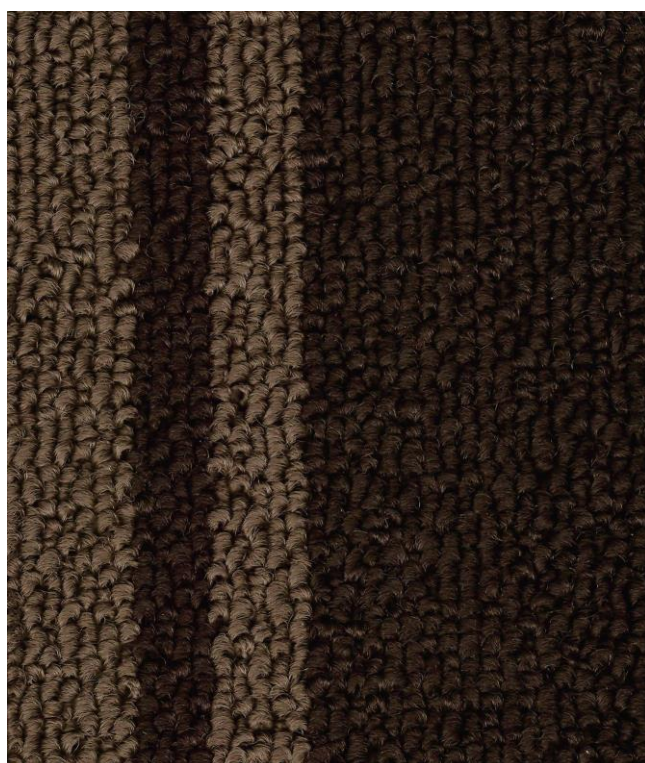
Xpress Black
A



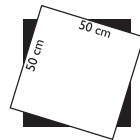
Xpress Grey
B



Xpress Blue
C



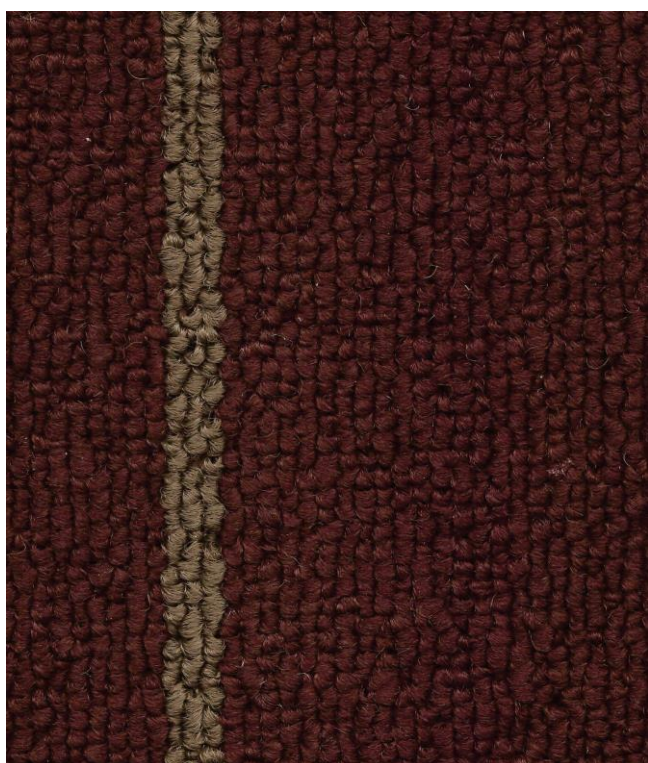
Xpress Chocolate
D



Xpress Brown
E



Xpress Beige
F



Xpress Red
G

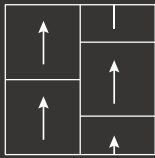


Xpress Green
H

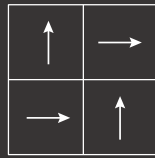
XPRESS

Style	XPRES
Construction	S Level
Yarn	Loop
Gauge	100%
Pile	PP
Height	1/10
Pile	inch
Weight Primary	4
Backing Secondary	mm
Backing Dimension	580 gr/m ²
Color	Non woven
System	PVC + Glass Fiber +
Area of Use	PVC
Static Control	50 x
Packing	50cm
	100% Solution Dyed
	Commercial
	Life of the Carpet
	20 pcs / Carton (5m ²)

Approved installation method



Ashlar



Quarter-turn

General Contract. Solution Dyed.
New Generation Polypropylene.



Flame Resistance.
Passes the British Hot Metal Nut Test (BS 4790)



Synthetic fiber and backing gives Inherent resistance to micro organism and insect attack.



Colourfast and Bleach Resistance. A Lifetime Anti-Static Guarantee



Stain Resistant



Roller Coaster.



Quality & Environmental Management



ISO



ISO 9001:2015 CERTIFICATION

Specifications are subject to normal manufacturing tolerances. As in all quality carpets, colors are subject to dye lot variations. Replaceable walk off mats are recommended at entrances to minimize soiling.



Terms and Conditions: Specifications are subject to manufacturing tolerances and maybe changed without prior notice. Dye lots may vary in colour from sample and between production lots. All product purchases are subject to Messara Trading Standard Terms and Conditions of Sale. Please refer to our Installation Guideline, Maintenance Manual and Warranty Document for further clarification.

Disclaimer: This Brochure is presented for informational purposes only. Every effort is made to ensure that carpet images are of an accurate representation of the product. However, they are for illustrative purposes only and colour variations may occur in actual product, and between die series. Please note that lineal patterns when installed directional, may produce an undesired effect when lines of the same colour meet of two edges. Installers need to monitor this during installations and reposition tiles where appropriate. Patterns that are random in nature may contain additional colour ways to the ones displayed on the samples. Please consult your commercial sales consultant for further informations.

